

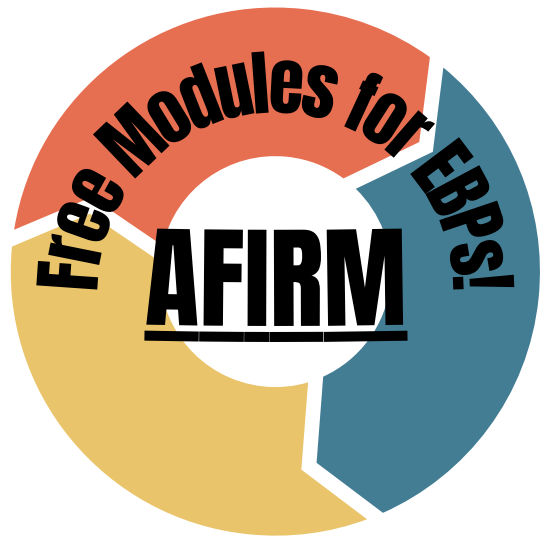
Glenn County SELPA

AUTISM SPECTRUM DISORDERS

1 Inclusion is Critical

Among children identified with Autism, about two-thirds have IQs within the average range (CDC 2021)

Students with ASD can be supported in accessing the General Education Curriculum and the CA State Standards with the use of Universal Design for Learning (UDL) and Evidence Based Practices (EBPs) for Autism



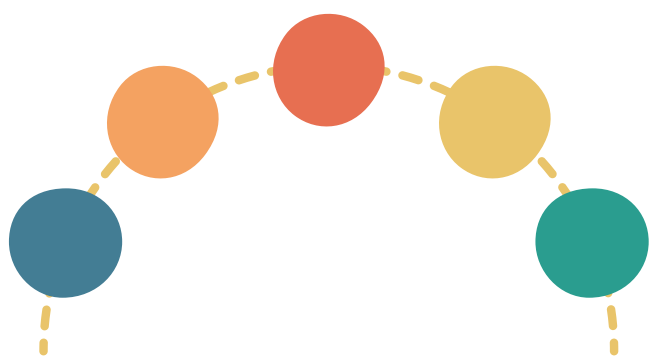
2 Student numbers have grown rapidly over the last 15 years in Glenn County

Currently there are 189 students with IEPs ages 3 -22 with Autism Spectrum Disorders, making it the 3rd most common disability.

3 Children Change!

Children with Autism are still developing and changing over time like all children.

Behaviors will be replaced by more mature behaviors as they get older and learn skills, never give up!



4 Resources for Families Are Free!

[Information on Evidence-Based Practices for Families - English](#)
[Information on Evidence-Based Practices for Families - Spanish](#)
[Autism Distance Education Parent Trainings](#)

5 Evidenced Based Practices Support School Initiatives - click for more info

[MTSS](#)

[UDL](#)

[PBIS](#)

[Inclusion](#)

[English Language Learners](#)

[High Leverage Practices](#)

[Social Emotional Learning](#)

